

hp designjet 5500ps  
hp designjet 5000ps  
Epson Stylus Pro 10000  
— Test Results —

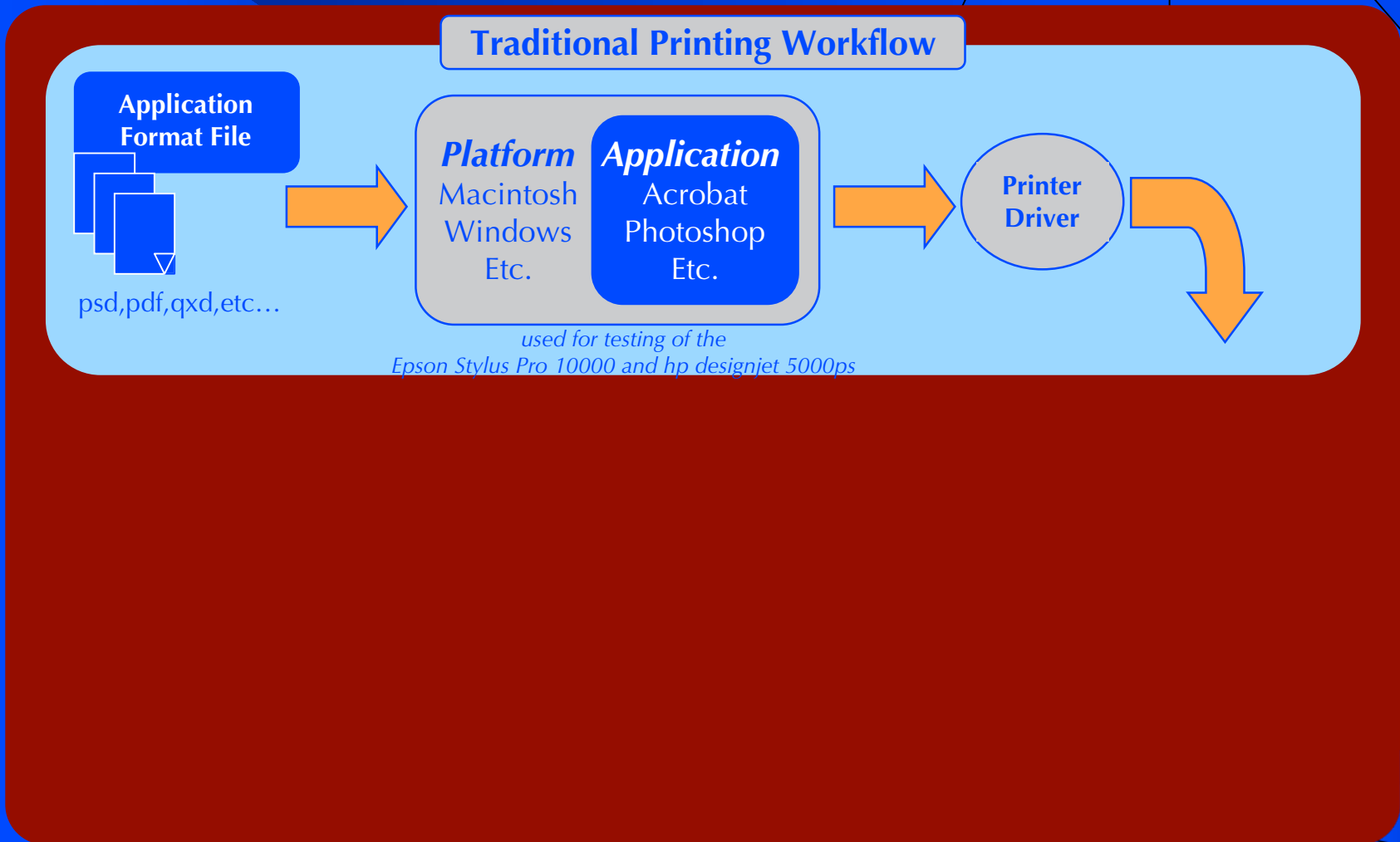
*spencer***LAB** Digital Color Laboratory  
Catherine Fiasconaro, Laboratory Manager

---

Spencer & Associates Publishing, Ltd.  
David R. Spencer, President

# Driverless Printing Workflow

©2002



# Driverless Printing Workflow

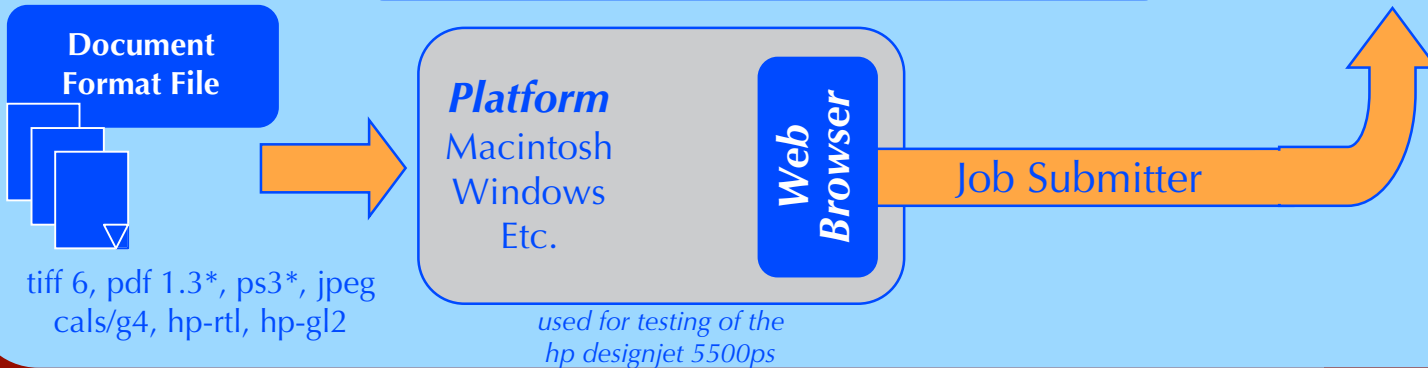
©2002

## Traditional Printing Workflow



*used for testing of the  
Epson Stylus Pro 10000 and hp designjet 5000ps*

## Driverless Direct Printing Workflow (as incorporated in the hp designjet 5500ps)



*used for testing of the  
hp designjet 5500ps*

\* Supported on the designjet 5500ps only

# Throughput Performance: Total Print Time

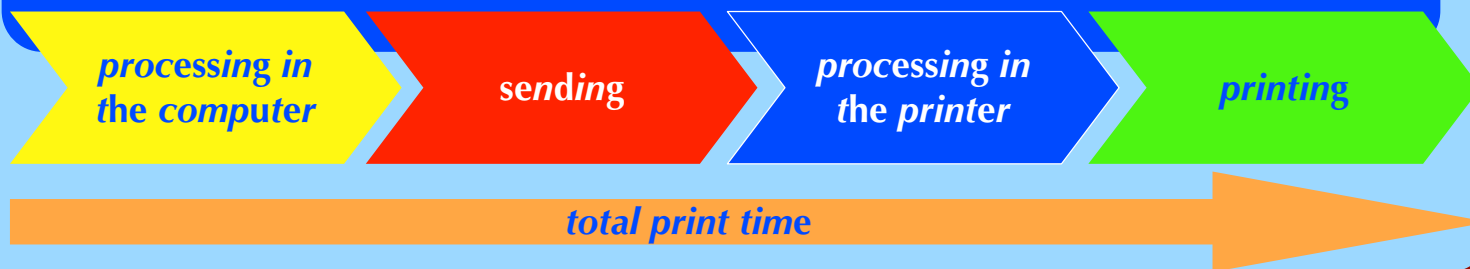
©2002

Throughput Performance is the *Total Print Time*  
– including all processes in the print workflow:  
Processing, Transmission, and Printing

# Throughput Performance: Total Print Time

©2002

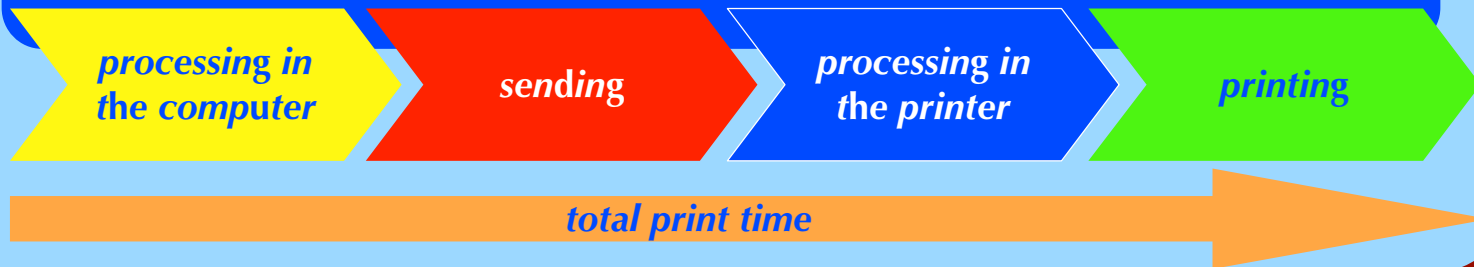
Throughput Performance is the *Total Print Time*  
– including all processes in the print workflow:  
Processing, Transmission, and Printing



# Throughput Performance: Total Print Time

©2002

Throughput Performance is the *Total Print Time*  
– including all processes in the print workflow:  
Processing, Transmission, and Printing



## SpencerLab Test and Analysis

hp designjet 5500 series provides:

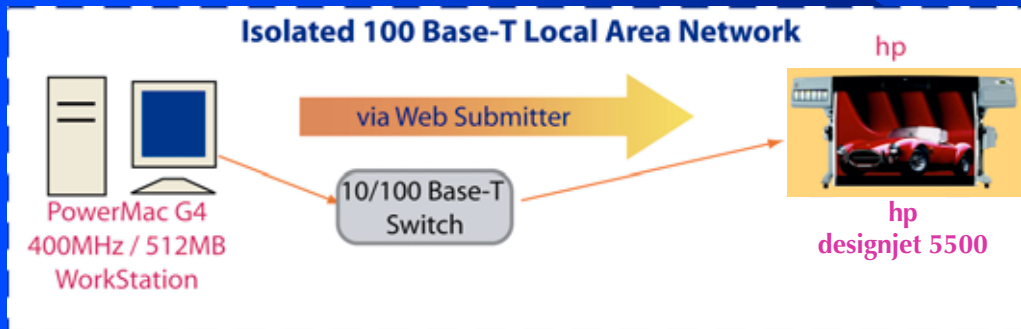
- up to **2X plus** faster performance than the Epson SP10000 in top IQ printing, and
- up to **2X** faster performance in production than the hp designjet 5000 in productivity day-to-day IQ printing

hp attributes this to:

- ✓ driverless printing
- ✓ fast network card
- ✓ up to 7 internal languages
- ✓ production print modes

# Methodology – Testing Setup

©2002



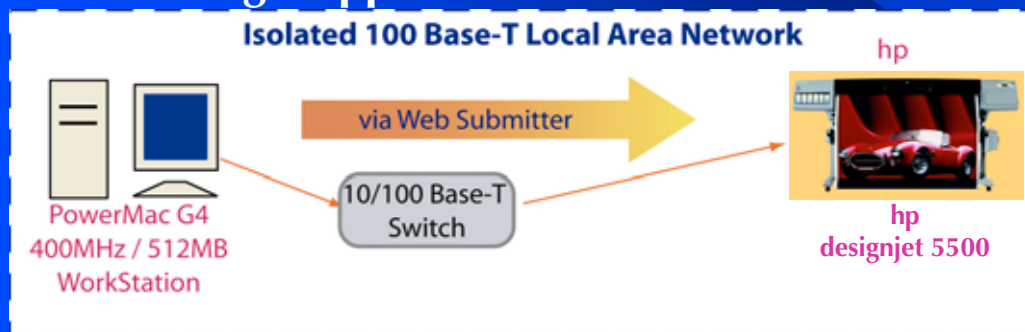
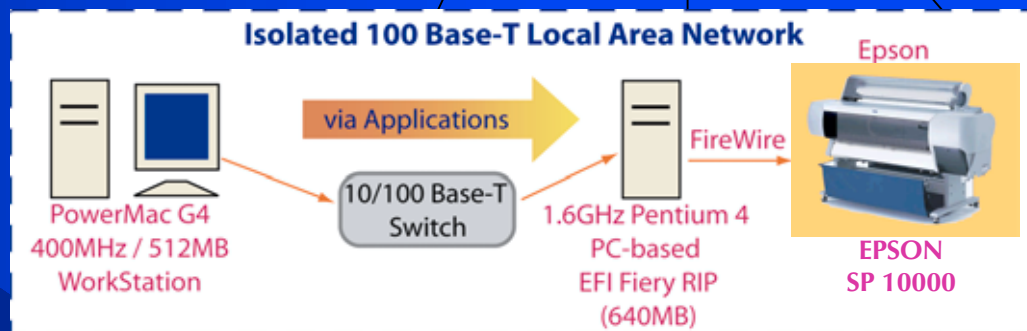
## hp designjet 5500ps

- All Documents Printed Through Web Job Submitter
  - No Applications Needed
  - Minimal Resources Used

# Methodology – Testing Setup

## Epson Stylus Pro 10000

- 1.6GHz Pentium 4 PC-based EFI Fiery Spark Pro 1.0 RIP
  - Required for comparable testing
- All Test Documents Printed Through Applications



## hp designjet 5500ps

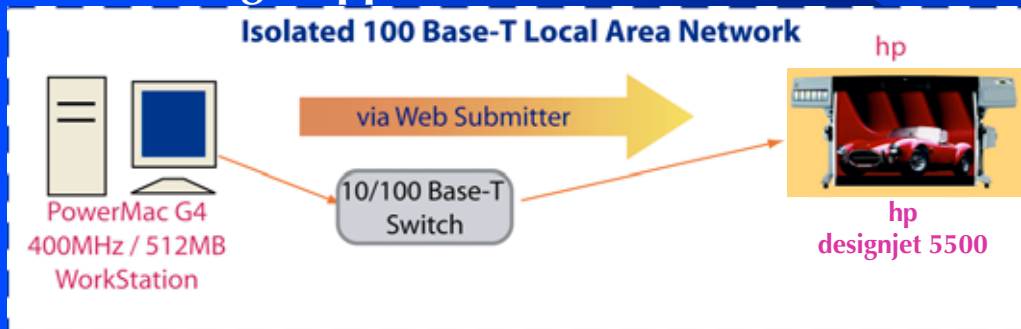
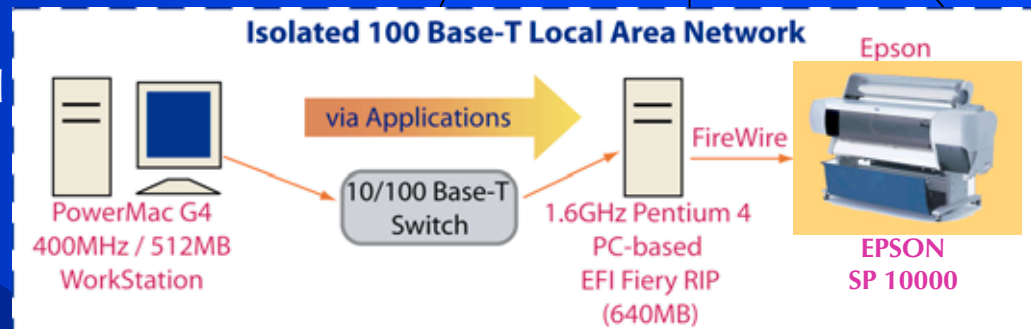
- All Documents Printed Through Web Job Submitter
  - No Applications Needed
  - Minimal Resources Used



# Methodology – Testing Setup

## Epson Stylus Pro 10000

- 1.6GHz Pentium 4 PC-based EFI Fiery Spark Pro 1.0 RIP
  - Required for comparable testing
- All Test Documents Printed Through Applications

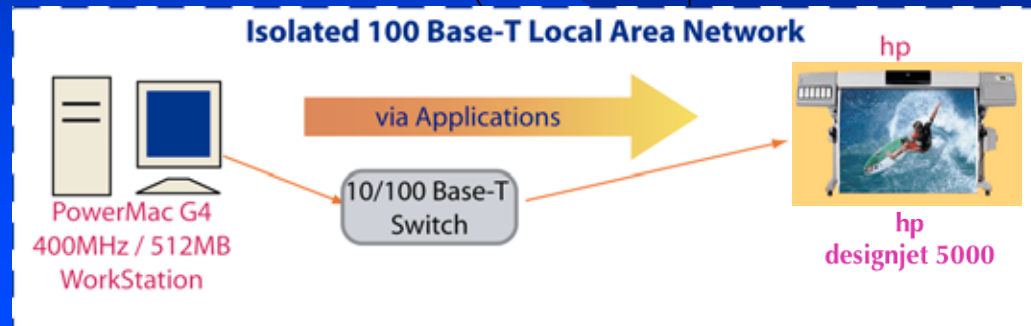


## hp designjet 5500ps

- All Documents Printed Through Web Job Submitter
  - No Applications Needed
  - Minimal Resources Used

## hp designjet 5000ps

- All Documents Printed Through Applications



# Test Setup – Documents & Settings\*

©2002

## hp dj 5500ps vs. Epson SP 10000

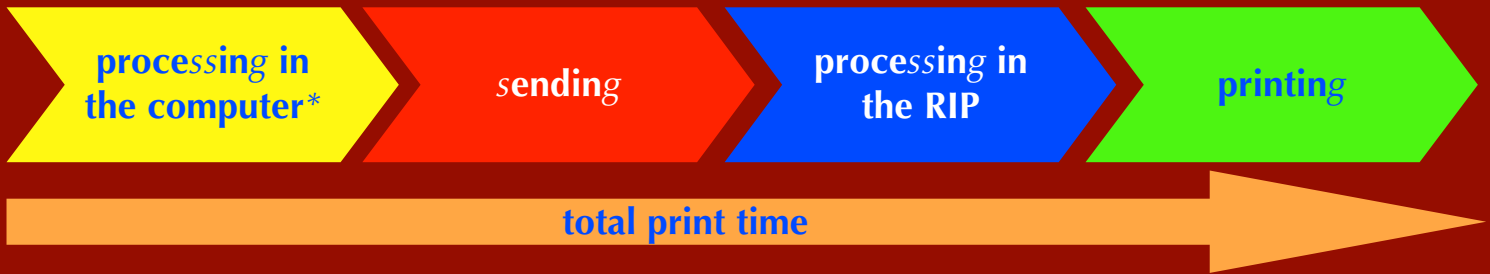
- ◆ **Castle sRGB: 324MB, 300dpi, 40"×54" TIFF**
  - ◆ hp designjet 5500ps
    - ◆ *Photo Imaging Glossy Media; Max Quality*
  - ◆ Epson Stylus Pro 10000
    - ◆ *Photo Glossy Media; 1440×720 dpi, Unidirectional*

## hp dj 5500ps vs. hp dj 5000ps

- ◆ **Covered Bridge: 68MB, 176dpi, 40"×30" TIFF**
  - ◆ hp designjet 5500ps
    - ◆ *Production Glossy Media; Production*
  - ◆ hp designjet 5000ps
    - ◆ *Productivity Photo Media; Productivity*

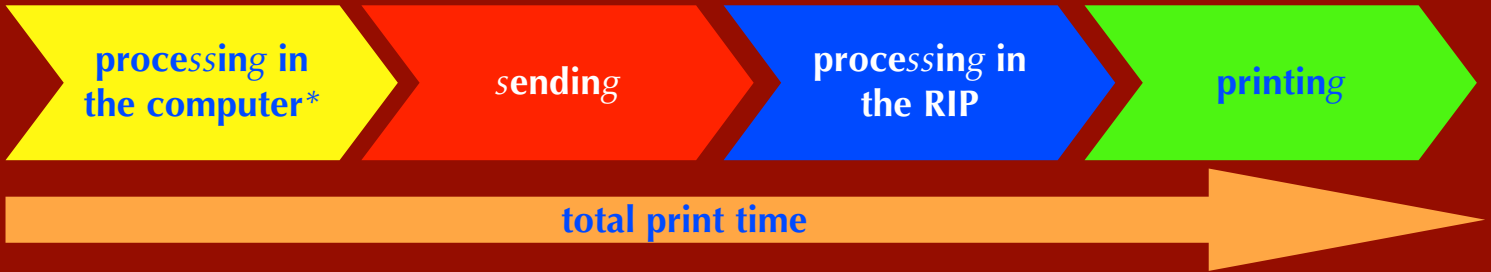
# >2X Total Performance Increase dj5500ps *vs.* Epson SP 10000 – Max IQ

©2002

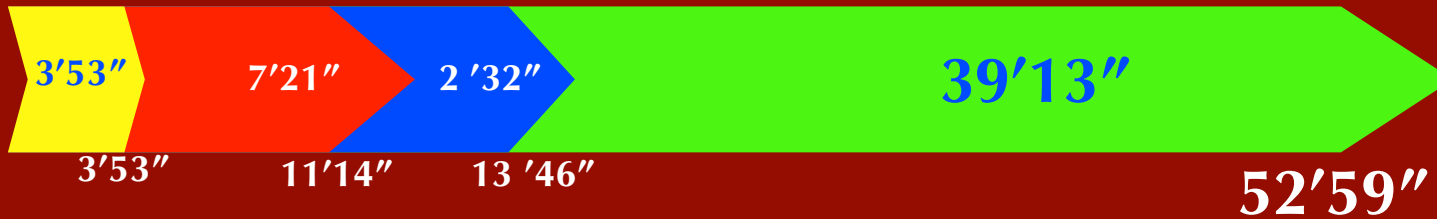


# >2X Total Performance Increase dj5500ps vs. Epson SP 10000 – Max IQ

©2002

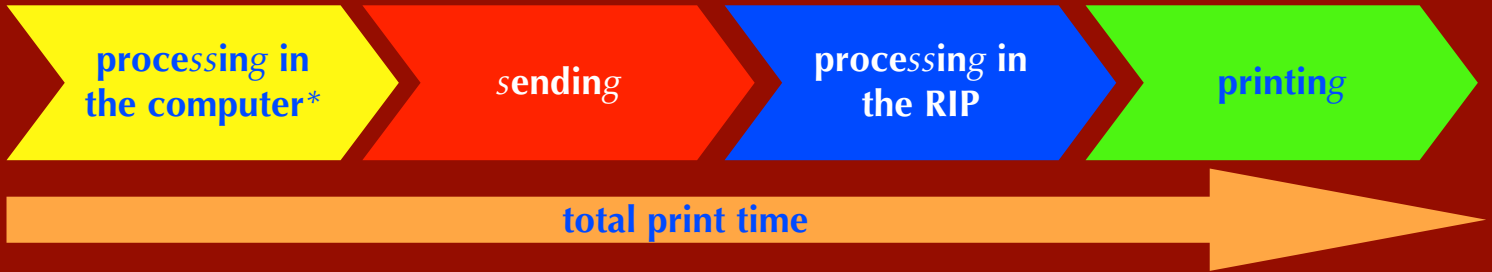


Epson SP 1000

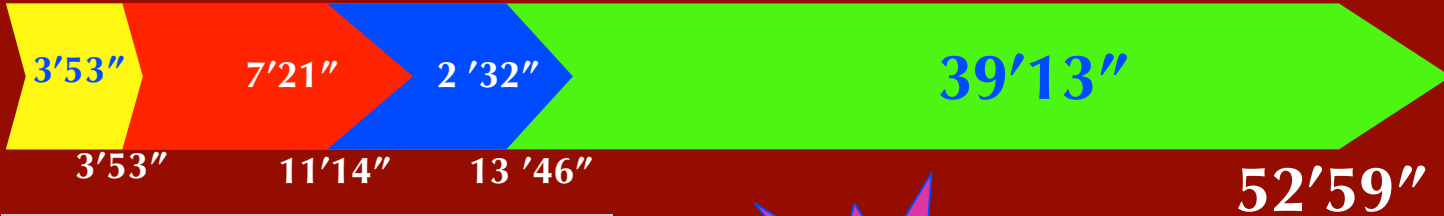


# >2X Total Performance Increase dj5500ps vs. Epson SP 10000 – Max IQ

©2002



Epson SP 1000



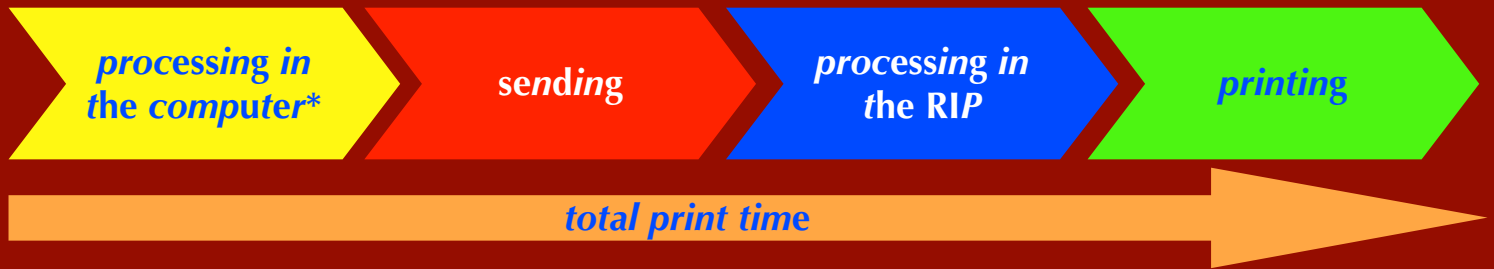
hp designjet 5500ps



\* dj 5500 Web Submitter bypasses processing in the computer

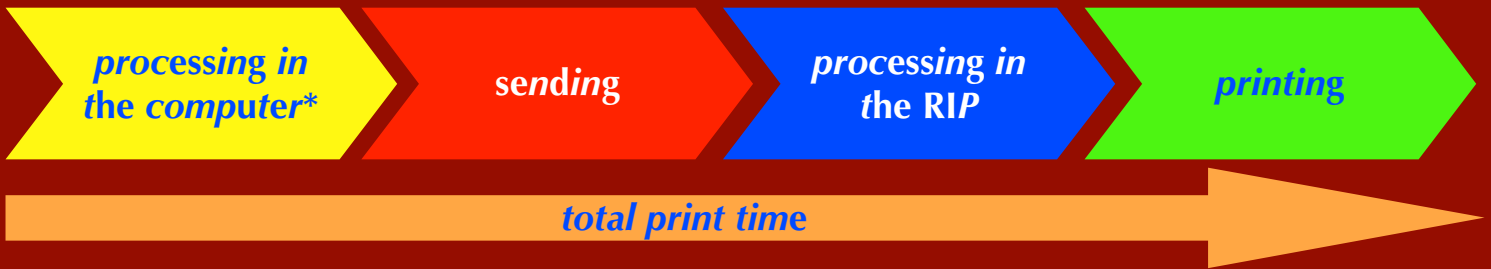
# >2X Total Performance Increase dj5500ps *vs.* dj5000ps - Production

©2002

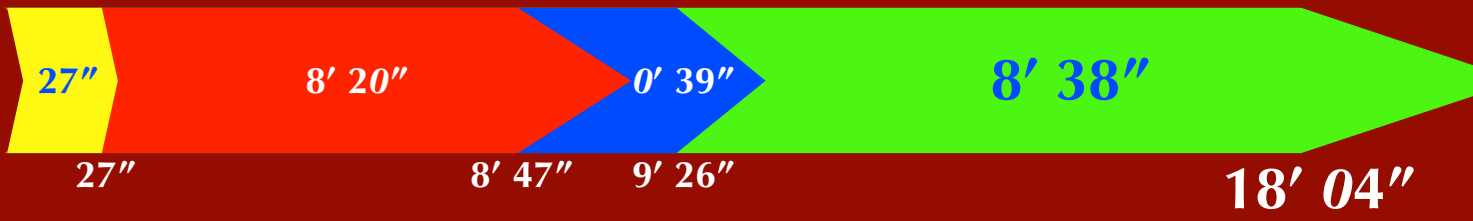


# >2X Total Performance Increase dj5500ps vs. dj5000ps - Production

©2002

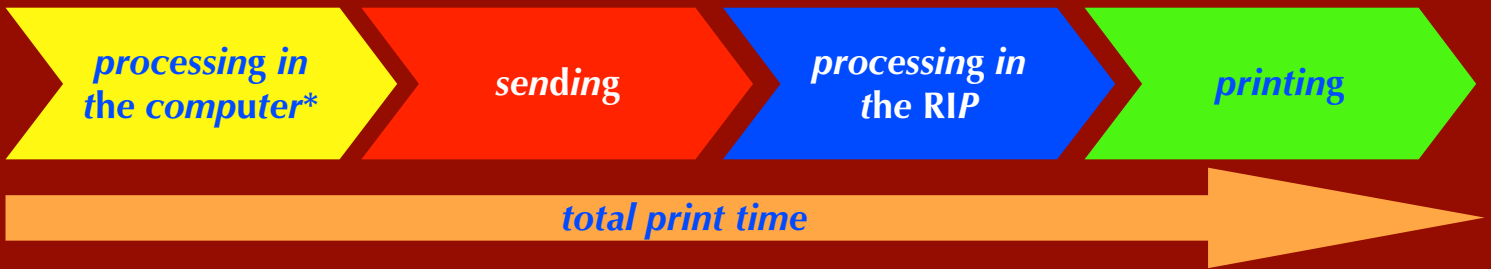


hp designjet 5000ps

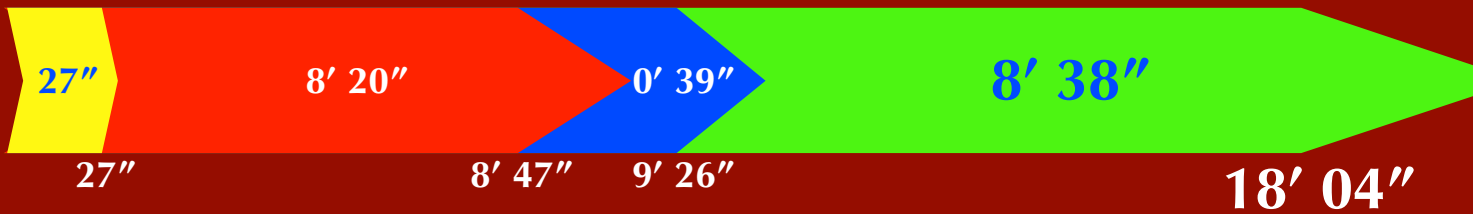


# >2X Total Performance Increase dj5500ps vs. dj5000ps - Production

©2002



## hp designjet 5000ps



## hp designjet 5500ps



\* dj 5500 Web Submitter bypasses processing in the computer