

---

# Print & Copy Quality Comparison

## **HP Officejet 6500 AiO Printer Series vs. Brother MFC-5490CN, Canon PIXMA MX860 & Epson STYLUS OFFICE TX600FW Inkjet All-in-Ones**

Spencer & Associates Publishing, Ltd.

David R Spencer, President

*spencerLAB* DIGITAL COLOR LABORATORY

Catherine Fiasconaro, Vice President, Operations / Director

Melville, New York

1.631.367.6655



# Overall Print & Copy Quality – Comparative Analysis Scorecard

*HP's overall output quality was higher than tested competitive printers*

Color Inkjet AiOs	Print – Default			Print – Draft		Copy – Default	
	Color	Images *	B&W	Color	B&W	Color	B&W
<b>HP Officejet 6500</b>	✓✓	✓	✓	✓✓	✓	✓	⊙
<b>Brother MFC-5490CN</b>	⊙	⊙	✗	⊙	✗	✗	✓
<b>Canon PIXMA MX860</b>	✓	✓	✓	✓	⊙	✓	⊙
<b>Epson STYLUS OFFICE TX600FW</b>	⊙	⊙	✗	✗	✗	⊙	⊙

\* Color Images on Glossy Media

Comparative Rating: ✓✓ Above   ✓ Average   ⊙ Below   ✗ Poor

Print quality elements of Text, Lines, Tints & Blends analyzed separately for Color and Black & White prints and Copy output. Independent testing by *SpencerLab* Digital Color Laboratory, commissioned by Hewlett-Packard Company.



# Overall Print & Copy Quality Comparative Analysis Summary

## HP Officejet 6500

Overall Default Print quality on plain paper was above average

- *Text and Lines were overall smooth; Black Text exhibited minor splatter under magnification*
- *Tints & Blends were overall the smoothest with good saturation*

Color Images on glossy paper were vibrant and smooth, however rendered soft with a slight Yellow cast

Overall Draft quality prints on plain paper were comparatively most acceptable

Color Copy quality on plain paper was average; Black & White was below; overall comparatively acceptable

## Brother MFC-5490CN

Overall Default Print quality on plain paper was below average

- *Text and Lines were faded and soft, with visible dropouts*
- *Tints & Blends appeared flat, faded, and exhibited graininess*

Color Images on glossy paper were smooth and sharp; however, flat with an excessive Magenta cast; overall below average

Draft mode prints on plain paper, especially Black & White, were poor quality

Color Copy quality was poor, but Black & White Copy on plain paper was average and comparatively acceptable

## Canon PIXMA MX860

Overall Default Print quality on plain paper was average

- *Text and Lines were smooth and crisp, however colored Text and Lines lacked saturation while Black maintained good density*
- *Tints & Blends exhibited distracting screening and colors appeared desaturated; banding was noticeable on prints*

Color Images on glossy paper were smooth, but soft and slightly desaturated with a Magenta cast; average overall

Color Draft mode prints on plain paper were average; Black & White exhibited distracting screening pattern and jaggedness

Color Copy quality on plain paper was average; Black & White Copy quality was low

## Epson STYLUS OFFICE TX600FW

Overall Default Print quality on plain paper was below average

- *Text and Lines were rendered jagged and grainy with distractive screening pattern*
- *Tints & Blends were saturated but had an Orange cast and exhibited distractive graininess*

Color Images on glossy paper were sharp but rendered desaturated, grainy, and appeared muddy; below average overall

Draft mode prints on plain paper were poor quality

Overall Copy quality on plain paper was low, with loss of detail

Independent testing by *SpencerLab* Digital Color Laboratory, commissioned by Hewlett-Packard Company.



# Print Output – Color (Default)

## HP Officejet 6500



- Color Text and Lines were *crisp, smooth, and had excellent saturation*; thin curved Lines maintained details well
- Tints & Blends and Color Images were *vibrant and smooth*, but slightly soft and grainy

## Brother MFC-5490CN



- Color Text and Lines were *faded and soft*; fine Line details were lost
- Tints & Blends and Color Images were *smooth*, but were grainy and *appeared dull and overall flat*

## Canon PIXMA MX860



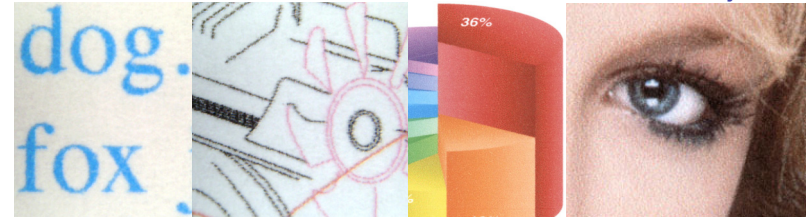
- Color Text and Lines were *sharp but lacked saturation*; Tertiary color Lines exhibited screening
- Tints & Blends were slightly *desaturated*; distracting screening pattern was noticeable in Yellow blends; Color Images had a *Magenta cast and appeared soft and flat*

## Epson STYLUS OFFICE TX600FW



- Color Text and Lines were *rendered grainy with distracting screening*; fine Lines were rendered broken
- Although Tints & Blends and Color Images were *saturated*, they had an *Orange cast with distracting graininess* and Images lacked shadow and highlight detail

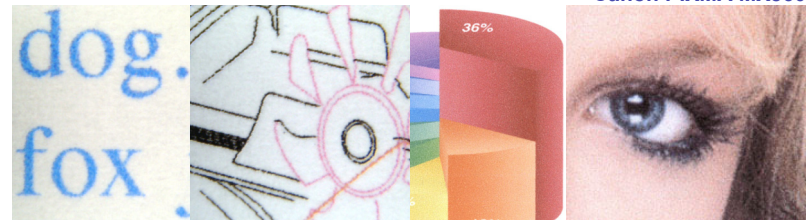
HP Officejet 6500



Brother MFC-5490CN



Canon PIXMA MX860



Epson STYLUS OFFICE TX600FW



Comparison in default modes for Plain paper.

Independent testing by SpencerLab Digital Color Laboratory, commissioned by Hewlett-Packard Company.



# Print Output – Color Images (Default)

## HP Officejet 6500



- Images and Tints & Blends were rendered vibrant and smooth with good saturation, but appeared soft with a slight Yellow cast
- Color Text and Lines were smooth, clean, and had excellent saturation; Line details were maintained well

## Brother MFC-5490CN



- Images and Tints & Blends were smooth; Images were sharp but appeared overall flat, losing shadow details, and with a Magenta cast
- Color Text and Lines were smooth and had good saturation, however Text and Lines were rendered slightly thick

## Canon PIXMA MX860



- Images and Tints & Blends were smooth, but slightly desaturated; Images were also somewhat soft and had a Magenta cast
- Text & Lines were slightly jagged and washed out; Red Text was rendered thick

## Epson STYLUS OFFICE TX600FW



- Images were sharp but appeared desaturated, grainy, and muddy; Tints & Blends also appeared muddy and grainy
- Text & Lines had unsmooth edges and exhibited a screening pattern; thin Lines were broken and thin curved Black Lines were rendered brownish

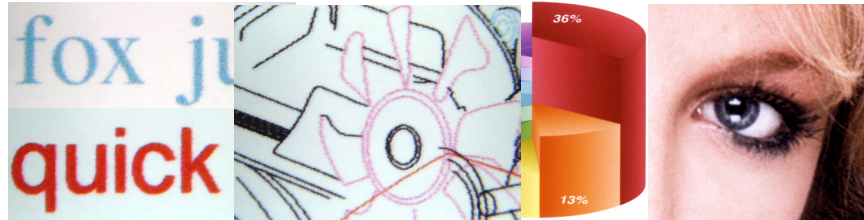
HP Officejet 6500



Brother MFC-5490CN



Canon PIXMA MX860



Epson STYLUS OFFICE TX600FW



Comparison in default modes for Glossy media.

Independent testing by SpencerLab Digital Color Laboratory, commissioned by Hewlett-Packard Company.



# Print Output – Black & White (Default)

## HP Officejet 6500



- ° Black Text and Lines were **smooth**; minor **ink splatter** was noticeable under magnification
- ° Tints & Blends and Images were comparatively the **smoothest**



HP Officejet 6500

## Brother MFC-5490CN



- ° Black Text and Lines were **soft and grainy with visible dropouts**; Fine Lines were **rendered broken**
- ° Tints & Blends and Images appeared **faded and exhibited graininess**

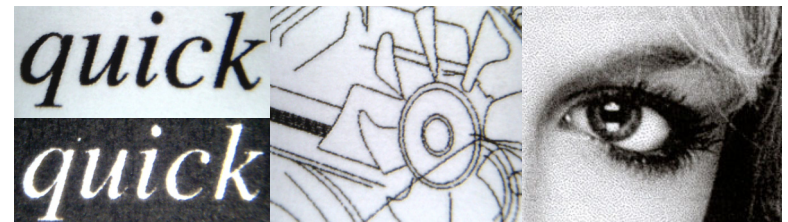


Brother MFC-5490CN

## Canon PIXMA MX860



- ° Black Text and Lines were **smooth and crisp**
- ° Tints & Blends displayed **distractive screening pattern** and Images were **grainy with excessive contrast**, losing shadow and highlight detail
- ° **Banding** was noticeable across prints

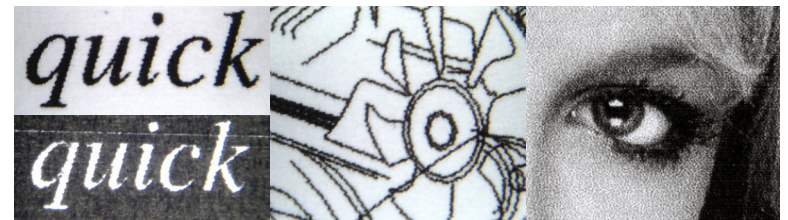


Canon PIXMA MX860

## Epson STYLUS OFFICE TX600FW



- ° Black Text and Lines were **jagged and thin curved Lines were rendered thick**
- ° Tints & Blends and Images were **very grainy**; Images were overall **dark**, losing shadow detail



Epson STYLUS OFFICE TX600FW

Comparison in Grayscale default modes for Plain paper.

Independent testing by SpencerLab Digital Color Laboratory, commissioned by Hewlett-Packard Company.



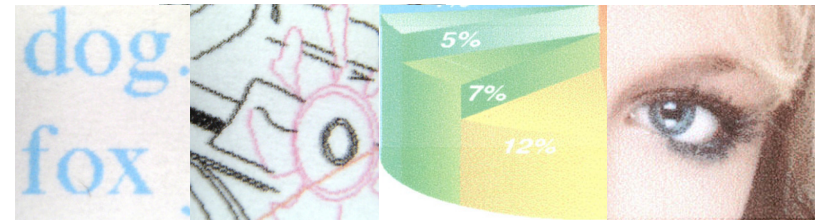
# Print Output – Color (Draft)

## HP Officejet 6500



- Color Text and Lines were soft, but exhibited greater smoothness and sharpness than other tested AiO's; acceptable quality for draft prints
- Tints & Blends and Color Images were smooth, but lacked saturation and had minor graininess; Color Images had some loss of detail and visible banding

HP Officejet 6500

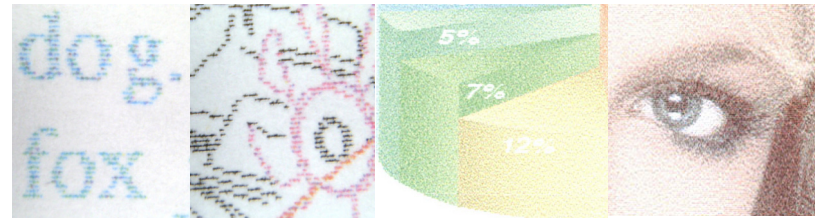


## Brother MFC-5490CN



- Color Text and Lines were desaturated, extremely jagged, and broken; Color Text had non-uniform character rendition
- Tints & Blends and Color Images were extremely grainy and desaturated; Images suffered loss of detail rendition

Brother MFC-5490CN

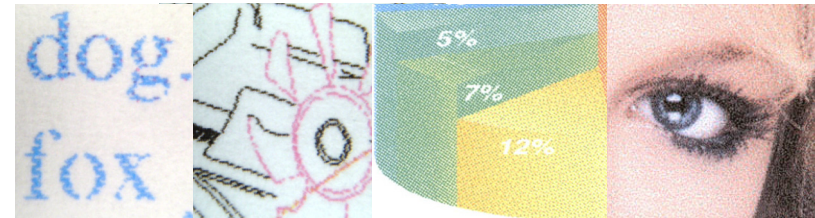


## Canon PIXMA MX860



- Color Text and Lines exhibited acceptable saturation, but had visible dropouts and were jagged with distracting screening pattern; Color Lines were rendered broken
- Tints & Blends exhibited distracting screening pattern; Color Images had a Magenta cast and were flat and grainy, resulting in loss of detail

Canon PIXMA MX860

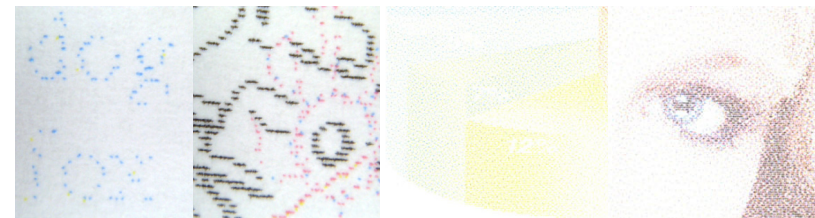


## Epson STYLUS OFFICE TX600FW



- Color Text and Lines were rendered broken, jagged, and least saturated; most Color Text was illegible and extremely desaturated
- Tints & Blends and Color Images were fully desaturated and grainy, resulting in severe detail loss

Epson STYLUS OFFICE TX600FW



Comparison in Draft modes for Plain paper.

Independent testing by SpencerLab Digital Color Laboratory, commissioned by Hewlett-Packard Company.



# Print Output – Black & White (Draft)

## HP Officejet 6500



- ° Black Text and Lines were soft with low edge sharpness and minor jaggedness; acceptable quality for draft output
- ° Tints & Blends and Images were smoothest, with minor graininess and some visible banding



HP Officejet 6500

## Brother MFC-5490CN



- ° Black Text and Lines were jagged and washed out; Lines were rendered broken causing loss of line thickness differentiation
- ° Tints & Blends and Images were grainy and appeared extremely faded, with very low density, and severe loss of detail



Brother MFC-5490CN

## Canon PIXMA MX860



- ° Black Text and Lines were overall comparable to HP 6500 output, but exhibited noticeable jagged edges
- ° Tints & Blends displayed distracting screening pattern and Images were grainy, had excessive contrast, and lacked shadow and highlight detail
- ° Banding was noticeable across prints



Canon PIXMA MX860

## Epson STYLUS OFFICE TX600FW



- ° Black Text and Lines were of poor quality, appearing pixelated and rendered broken, thus losing definition
- ° Tints & Blends and Images appeared extremely grainy and with visible banding; Images were soft with severe loss of detail



Epson STYLUS OFFICE TX600FW

Comparison in Grayscale Draft modes for Plain paper.

Independent testing by SpencerLab Digital Color Laboratory, commissioned by Hewlett-Packard Company.

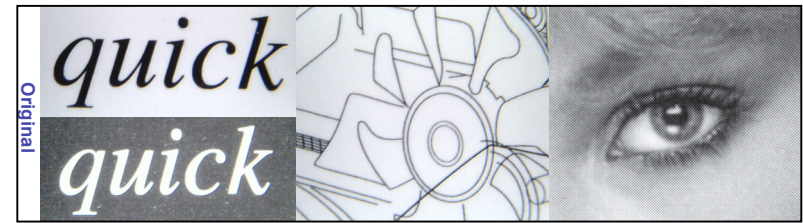
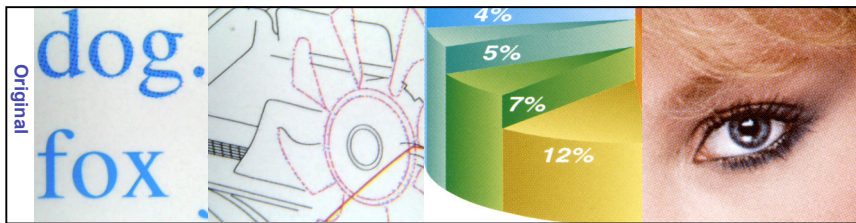
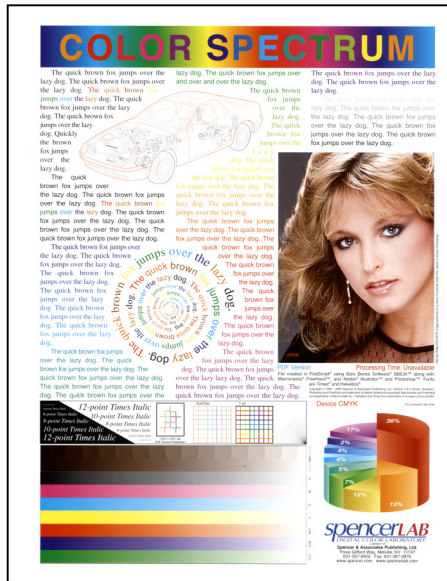




# Copy Quality Analysis

All Copy output was produced in default mode (Black or Color) on plain paper  
 Offset press output used as Copy originals

- Originals from a Heidelberg Speedmaster 74 sheet-fed offset press
- Printed using 175-line AM screening



Independent testing by SpencerLab Digital Color Laboratory, commissioned by Hewlett-Packard Company.



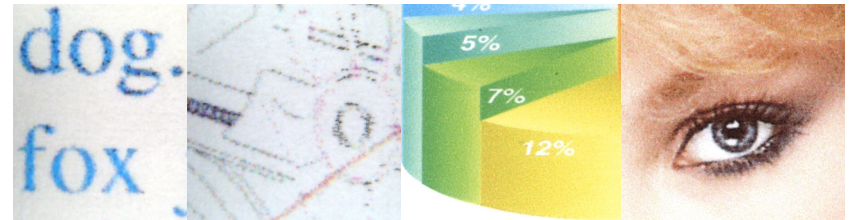
# Copy Output – Color (Default)

## HP Officejet 6500



- Color Text and Line quality was average; some Red and Purple Text and Line colors were misinterpreted and printed with mixed Black; fine Lines were rendered broken and faded;
- Tints & Blends and Color Images were overall smooth; Images were sharp, with slight Yellow cast

HP Officejet 6500

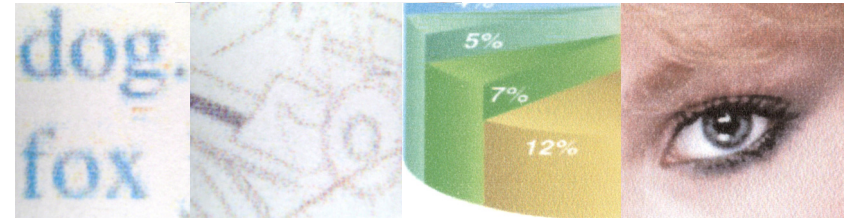


## Brother MFC-5490CN



- Color Text and Lines were blurry, with Lines being extremely washed out, resulting in loss of detail
- Tints & Blends were desaturated and grainy, with a muddy appearance; Color Images appeared dull, lacking sharpness and detail

Brother MFC-5490CN

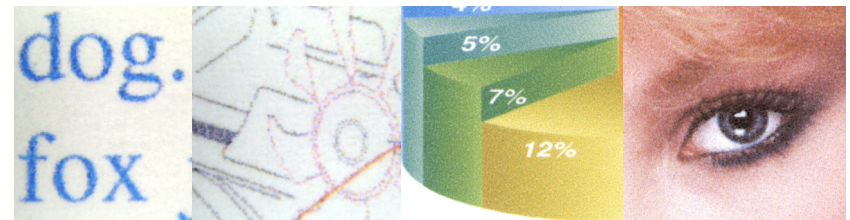


## Canon PIXMA MX860



- Color Text and Line quality was acceptable; colors were reproduced well, however, slightly desaturated; fine Lines maintained detail, although dropouts were visible
- Tints & Blends appeared muddy, with some graininess; Color Images were soft and with low sharpness, and displayed a Magenta cast

Canon PIXMA MX860

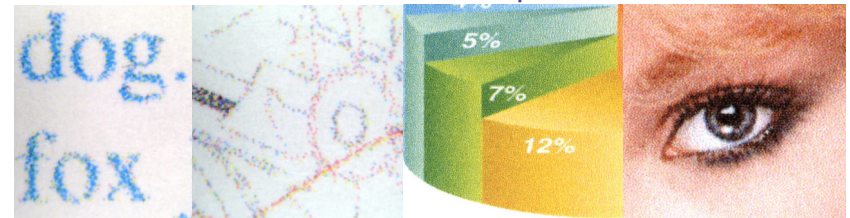


## Epson STYLUS OFFICE TX600FW



- Color Text and Lines had distracting screening pattern, lacked sharpness, and appeared blurry; Lines were rendered broken and with loss of detail
- Tints & Blends and Color Images were extremely grainy; Tints & Blends appeared muddy; Images were slightly blurry and had a strong Orange cast

Epson STYLUS OFFICE TX600FW



Comparison in Color default modes on Plain paper.

Independent testing by SpencerLab Digital Color Laboratory, commissioned by Hewlett-Packard Company.



# Copy Output – Black & White (Default)

## HP Officejet 6500



- Text and Lines were **soft, due to ink splatter**; Text was thicker than Original; some fine Lines were rendered broken, however, **most of the Original content was maintained on the Copy**
- Tints & Blends and Images **lacked smoothness due to distracting streaking**; Images were sharp in comparison to other tested AiOs



HP Officejet 6500

## Brother MFC-5490CN



- Text and Lines were rendered slightly thicker than Original and appeared soft; thin curved Lines were broken and jagged, however, **most of the Original content was maintained on the Copy**
- Tints & Blends were grainy and had **visible streaking**; Images were flat, lacked sharpness, were rendered overall dark, and with loss of detail; **distracting contouring was apparent**



Brother MFC-5490CN

## Canon PIXMA MX860



- Text was reproduced well on Copy, but with minor dropouts
- Fine Lines were rendered **broken and washed out**, with some Lines not being reproduced, causing **content loss on Copy**
- Tints & Blends and Images had a **distracting streaking pattern**; Images had **plugged shadows, blown highlights, and visible banding**

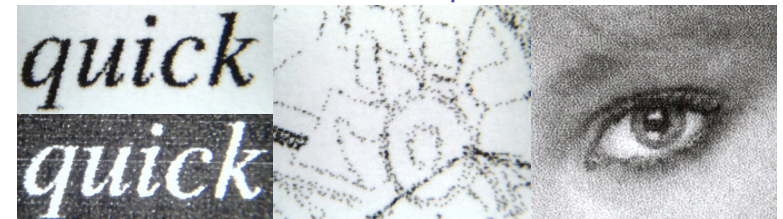


Canon PIXMA MX860

## Epson STYLUS OFFICE TX600FW



- Text and Lines lacked edge sharpness; Text was thicker than Original and had jagged edges; Thin Curved Lines were broken and washed out, and some Lines were not reproduced, resulting in **content loss on Copy**
- Tints & Blends and Images were **extremely grainy**; Images lacked sharpness, but overall tone reproduction was good



Epson STYLUS OFFICE TX600FW

Comparison in Black (B&W) default modes on Plain paper.

Independent testing by SpencerLab Digital Color Laboratory, commissioned by Hewlett-Packard Company.



# Print & Copy Quality – Methodology

## Competitive Products Tested — Color Inkjet All-in-Ones

HP Officejet 6500 All-in-One Printer

Brother MFC-5490CN, Canon PIXMA MX860, and Epson STYLUS OFFICE TX600FW

Printing test results are anticipated to apply to available printer-only versions of tested AiOs

◦ *HP Officejet 6000 Printer and Epson STYLUS OFFICE T40W Color Printer*

## Test Parameters

Color Spectrum RGB and Enhanced Black PDF test documents from the *SpencerLab Printer Test Suite*

Printer Maintenance (*Print Head Cleaning, Alignment, etc.*) performed prior to testing

Tests utilized a single printer of each manufacturer, assumed to be representative

Printed in default mode for each paper type

- *Draft mode also printed on plain paper*
- *Grayscale default mode used for Enhanced Black file*
- *Printed from Windows XP (SP3) using Adobe Reader 9.1.2 with “Let Printer Determine Colors” box checked*

Copied in default mode (Black or Color) on plain paper

- *Offset press output used as Copy originals*

### Media

- *Plain Paper: Domtar Multi-System Ultra with ColorLok Technology, 20#, 96 Brightness*
- *Glossy Paper: Office Depot Inkjet Presentation (Premium Brochure/Flyer) Paper, Glossy 43#, 89 Brightness*

### Ink

- *All test output was produced using Genuine OEM Ink supplies*

### Print and Copy quality analysis

- *Print: Emphasis on Text, Lines, Tints & Blends on Plain paper; Images on Glossy paper*
- *Copy: Plain paper only*

Color Spectrum RGB



Enhanced Black



\* Printer-only version model numbers provided by HP.

Independent testing by *SpencerLab* Digital Color Laboratory, commissioned by Hewlett-Packard Company.



---

# HP Officejet 6500 AiO Printer Series

## Office Inkjet Comparison Tests



Spencer & Associates Publishing, Ltd.  
David R Spencer, President

*spencerLAB* DIGITAL COLOR LABORATORY

Catherine Fiasconaro, Vice President, Operations / Director

---

Melville, New York

1.631.367.6655

