

SpencerLab/CRN Printer Test Suite

Make That Sale

Today's marketplace is competitive, and customers demand quality and performance at the right cost from the printer solutions you provide.

The **SpencerLab/CRN Printer Test Suite** is an important tool that helps you ensure your customers are finding the right printer to suit their overall needs. Comprised of the same files used in the CRN Test Center, you can now run your own Print quality and Speed tests – in your own offices or better yet... right at your customers' sites!

The Infinite Value:

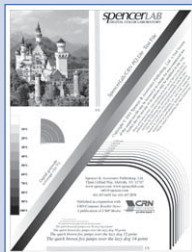
- Set and meet your customers' expectations
- Choose the optimal solution for your customer
- Educate your sales force and customers
- Reduce customer complaints and return rates:
a satisfied customer is a repeat customer
- Valuable Marketing Tool: an additional service you provide
- Demonstrate the value, you as a solution provider, can offer

\$50 Discount

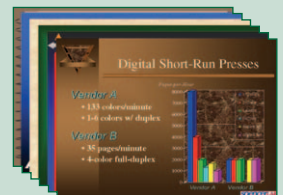
FREE DOWNLOAD

go to: www.spencerlab.com
and click on the CRN Special

Print Quality



Throughput Performance



SpencerLab/CRN Printer Test Suite

Print Quality Testing

Five test files are specifically designed to demonstrate the Print Quality of any printer, black-and-white or color. A copy of Adobe Acrobat Reader is included and all of the files are in PDF format – for compatibility with any Windows or Mac OS print driver. Specific features and qualities of each of the files are:



SpencerLab/CRN PQ Lite (monochrome)

Covers major areas of interest for basic grayscale Print Quality evaluation:

- Text legibility, sharpness, typographic color, etc.
- Line widths, sharpness, curve and angle smoothness, solidity, etc.
- Tint accuracy and Blend smoothness, highlight and shadow retention
- Image linearity, range, highlight, midrange, and shadow detail, etc.



Color Spectrum

Created from hand-coded PostScript, this test document combines text of various sizes and color, line art, blends, an image with highlight and shadow detail and smooth flesh tones, and a registration target into a comprehensive test that gives an excellent general overview of a printer's quality.



Graphic RGB

Also created from hand-coded PostScript, this sRGB document extensively tests color tints and blend smoothness, both through full saturation and from highlight to shadow for each primary and secondary color. Patterns are also included to test angled lines as well as black, color and reverse text.



Castle sRGB Image

The Castle image is an excellent gauge of a color printer's ability to reproduce detail linearly from highlight (sky and castle) through midrange (mountains) to shadow (trees). Memory colors, such as sky blue, tree green, stone gray, and brick red, are also present.



Covered Bridge sRGB Image

The Covered Bridge image is an excellent gauge of a color printer's ability to reproduce memory colors, such as sky blue, grass green, stone gray, and bridge red. Some shades of blue in the stream are out of gamut on many printers, and inadequate translations may cause contouring and/or unrealistic color shifts. The image also contains many areas of fine detail for testing both color and monochrome printers.



Price:

- \$199 each CD
- \$99 each additional copy
- \$499 5 CD pack

* Volume discounts are available

Throughput Performance Testing

Although the maximum rate at which the marking engine can print a page necessarily restricts performance, throughput speed within a realistic workflow includes spooling and networking, as well as RIP/controller processing time. In addition to the two images, print time can be compared for monochrome and color versions of a ten-page report and a representative eight-page presentation. Printing multiple copies allows demonstration of features such as electronic collation.